

VITA EHCP by Invision360

A guide for parents and carers



The Invision360 Journey

Invision360 is passionate about improving children and young people's outcomes through high-quality EHCPs.



Founded in 2021 by experienced SEND service leader, Philip Stock, Invision360 has a rather personal backstory.

Philip's brother, Craig, has complex SEND and was educated in specialist provision. After spending most of his career working within local authority SEND Services as a Principal Educational Psychologist and Head of SEND and Inclusion services, Philip had first-hand experience of the challenges that exist with ensuring high-quality EHCPs from both a LA and family perspective.

Philip led on EHCP quality assurance frameworks in his LA positions. Knowing that technology could be the answer, Philip stepped out of local authority SEND leadership to launch Invision360, with an aim to improve outcomes for children and young people through developing higher quality EHCPs.

The EHCP audit module is designed to improve the quality of EHCPs, a recognised area of challenge nationally as illustrated through Ofsted and CQC local area SEND inspections.

Over 60 local authorities in England currently commission Invision360 QA software for EHCPs.

Our new platform, VITA, aims to enhance the quality of EHCPs while making a significant positive impact on the SEND landscape. By using generative AI, we enable local authority SEND professionals to spend more time engaging with children, young people, and their families, fostering greater collaboration and co-production.

Invision360 are engaging with parent carer forums and SEND youth forums to ensure that the shaping of this new, exciting, and innovative platform is contributed to by all key stakeholders.

The platform will be piloted with several local authorities and is set to launch in May 2025 with the support of Innovate UK Smart Grant funding.



About Invision360

Award-winning Quality Assurance and generative AI modules for Local Authorities across England.

Improving the quality of EHCPs for children and families.

Transforming the landscape of EHCPs and Annual Reviews, our Invision360 audit and draft EHCP writing modules are driving standards in local authorities across the country.

By reducing subjectivity, fostering collaboration and ensuring the C/YP and parent / carer voice is an integral part of local authorities' quality assurance frameworks and SEND practice.

Invision360 Advisory Board

Invision360 has appointed a board of trusted advisors in the fields of SEND and generative AI to ensure that the VITA solution meets the needs of all stakeholders in the EHCP process.



Tina Emery, OBE:

Former co-chair of the national parent carer forum (NPCF) and past member of the NPCF south west regional steering group



Lisa Savage:

Director of Education, MIAG (an independent specialist education provider) and ex-Head of LA SEND services



Kevin Yong:

Managing Director, Coram-i (Coram's pioneering children's social care consultancy)



Phil Stock:

Founder and CEO of Invision360, and experienced Principal Educational Psychologist and SEND leader



Chris Munday:

Former Director of Children's Services and National Chair of the ADCS Resources and Strategy Committee. Led the Change Programme in London



Cheryl Eyre:

Former Assistant Director for Education and Learning and experienced Educational Consultant

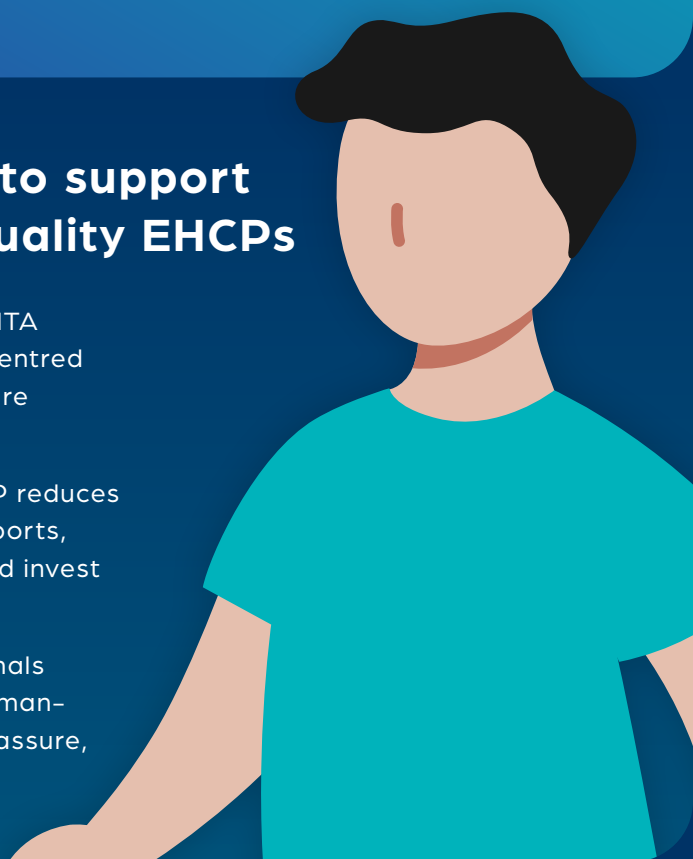
Introducing VITA

A platform that uses technology to support co-production and ensure high quality EHCPs

Co-production and improved quality is at the heart of the VITA concept. We use generative AI to ensure numerous family centred assessments and the views of the child and parent / carer are accurately synthesised into high quality EHCPs.

By embedding AI into the EHCP drafting process, VITA EHCP reduces the administrative effort needed to collate multi-agency reports, giving Local Authority teams more time to tailor support and invest in co-production to make a difference to C/YP's outcomes.

VITA EHCP enhances, rather than replaces, SEND professionals advice, by creating a first draft suggestion, and ongoing 'human-in-the-loop' screens that empower professionals to quality assure, revise, and co-produce material generated.



Differentiated features include:

Local knowledge and expertise are preserved through the VITA process. Person-centered assessments are conducted by local professionals, such as Educational Psychologists, Speech and Language Therapists, and teachers etc. Alongside the input from the child and parents voice, VITA collects, reviews, and synthesizes this information into a first draft of a high-quality EHCP. This draft can then be reviewed and refined through co-production meetings.

In addition to creating high-quality EHCPs and offering suggestions for improvement, VITA ensures significant time savings. This efficiency allows SEND resources to be redirected to other important activities, such as co-production meetings with children and young people and their parents or carers during the Draft EHCP stage.

VITA has been designed to align with the Invision360 quality assurance criteria. This ensures that the plans are of high quality early on in the EHCP production process, leading to better outcomes for C/YP and allowing more time for co-production when finalising the plan.

The security and safety features are of the highest quality, with multi-factor authentication, encryption, retention policies, and role-based access controls.

VITA makes recommendations on how to improve the quality of the draft content, enabling early intervention to continuously improve the quality of EHCPs, and the advice that feeds into these.

Security & Data Protection

VITA by Invision 360 is an EHCP production support tool, that uses generative AI to automate some of the manual tasks carried out by caseworkers.

This system helps caseworkers to work more efficiently and focus on interventions that will make the greatest difference to children and young people's outcomes.

VITA augments, rather than replaces, human delivery by producing a first draft suggestion and ongoing 'human-in-the-loop' feedback to quality assure the material generated. For the more high-risk and personalised elements of the EHCP process (children and young people's outcomes) VITA encourages caseworkers and professionals to take ownership of these.



Caylin – Product Manager

At Invision360, we prioritise your privacy and data protection as well as that of your child or young person.

VITA is designed with robust security features to ensure that your personal information is kept confidential and secure. We comply with all relevant data protection regulations, work closely with each local authority to agree on the right data-sharing approach, and employ advanced encryption technologies to safeguard your data.

Local authority staff only have access to professional advice and the first iteration text relevant to their caseload. Any Invision360 staff that work on developing the product are DBS checked and only have the minimum access needed to maintain the product's high-quality and safety.

You and your child or young person's data is only held for 90 days, after which it is permanently deleted and will never be used for any other purpose.

Frequently Asked Questions

1

Will VITA reduce the personalisation or individualisation of a child's EHCP?

No, VITA is designed to ensure that each EHCP produced is child- and family-centered and highly individualised. The views of the children and young people, parent/carer and teachers are still accessed and submitted in the existing way. The information will then be inputted into the VITA platform which simply collates, reviews, and synthesizes this information into a high-quality EHCP.

.....

2

Does VITA completely remove the human from developing an EHCP?

No, all professional assessments (e.g., Educational Psychologist assessment) still occur using local expertise. The views of the children and young people, parent/carer, and teachers are still accessed and submitted in the same way. This information is inputted into the VITA platform, which collates, reviews, and synthesizes this into a first iteration of an EHCP. The local authority SEND officer then reviews and amends this version before producing the Draft EHCP, which can then be discussed with the child or young person and parents/carers in a co-produced meeting.

.....

3

Why is there a need for VITA?

The quality of EHCPs is an area of challenge nationally. EHCP quality is one of the most prevalent areas of weakness identified in Local Area SEND inspections undertaken by Ofsted and CQC across the country. There has been a big focus on 'timeliness' in terms of an EHCP being produced within the statutory 20-week timeframe, however, we at invision360 believe quality should not be compromised and should be a key focus area.

.....

4

Does VITA promote coproduction?

Yes, all of the co-produced local assessments (e.g., Educational Psychologist assessment, speech and language therapist assessment, teachers' feedback, and children and young people and parent/carer views) are inputted into VITA to ensure an individualised and co-produced EHCP. In addition, the manual resources/time saved can be redirected into other SEND activities such as co-produced meetings at the EHCP draft phase.

Frequently Asked Questions

5

Is the data storage compliant with relevant privacy laws, such as GDPR?

Yes, our solution will be fully GDPR compliant, with data security and privacy remaining our key priority throughout tool development.

.....

6

How long will documents be stored before they are deleted?

We are working with local authorities to establish what an appropriate retention policy will be for information which contains C/YP's data. We will jointly agree on the shortest possible time that also meets local authorities' governance or reporting needs.

.....

7

How will the tool collect, store, and handle C/YP's, and their parents / carers data?

Local authority caseworkers will upload professional advice directly into the tool, in the same way they do for existing case management systems. VITA will automatically delete all data and draft plans which contain C/YP's data after 90 days, or another agreed-upon period with local authorities. All documents and data within the VITA system are encrypted at rest and in-transit, with strong security controls. C/YP's data never leaves the London AWS datacentre.

.....

8

Which, if any, other organisations / third parties will have access to the data?

Our product is built on AWS infrastructure which provides us with industry-leading security, scalability, reliable performance. There are no other third parties which will have access to the data without consent from the local authority.

Frequently Asked Questions

9

Where is information stored?

Our product, and information / data held within the product, is hosted in the London AWS data centre.

.....

10

What security certifications does Invision360 hold?

Invision360 holds ISO27001 accreditation and Cyber Essentials Plus to ensure we adhere to the more up to date security standards.