



# VITA EHCP BY INVISION360

*A guide for parents and carers*

*Recognised by*



# ABOUT INVISION360



## *Award-winning Quality Assurance and generative AI modules for Local Authorities across England.*

Invision360 was founded in 2021 by Philip Stock, an experienced Educational Psychologist and SEND leader whose brother has complex SEND needs. Having worked in local authority SEND services, Philip understood firsthand the challenges families face in getting high-quality EHCPs.

**Our mission is simple:** Every child deserves an EHCP that truly captures who they are and sets them up for success.

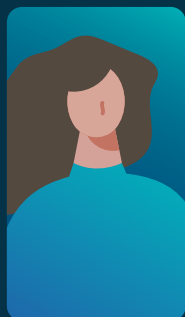
Over 60 local authorities across England already use our award – winning SEND quality assurance modules. VITA represents the next step in our journey to transform SEND services for the better.

VITA has now launched after a successful pilot phase and with the support from Innovate UK Smart Grant funding.

# ABOUT INVISION360

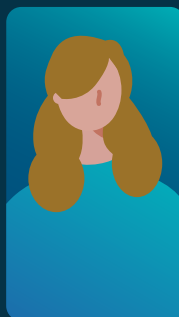
## *Invision360 Advisory Board.*

Invision360 has appointed a board of trusted advisors in the fields of SEND and generative AI to ensure that the VITA solution meets the needs of all stakeholders in the EHCP process.



### **Tina Emery, OBE:**

Former co-chair of the national parent carer forum (NPCF) and past member of the NPCF south west regional steering group



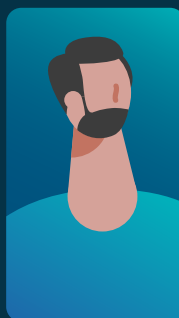
### **Lisa Savage:**

Director of Education, MIAG (an independent specialist education provider) and ex-Head of LA SEND services



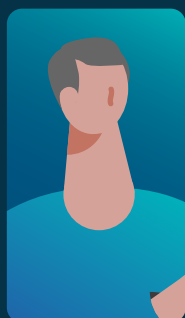
### **Kevin Yong:**

Managing Director, Coram-i (Coram's pioneering children's social care consultancy)



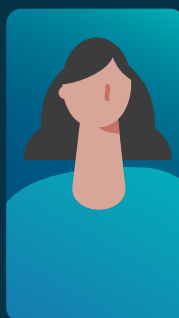
### **Phil Stock:**

Founder and CEO of Invision360, and experienced Principal Educational Psychologist and SEND leader



### **Chris Munday:**

Former Director of Children's Services and National Chair of the ADCS Resources and Strategy Committee. Led the Change Programme in London



### **Cheryl Eyre:**

Former Assistant Director for Education and Learning and experienced Educational Consultant

# INTRODUCING VITA



## *What VITA means for your family*

Your child deserves an EHCP that truly captures who they are and what they need to thrive. VITA is here to help make that happen.

VITA uses generative AI to help create better quality EHCPs - but your voice, your child's voice, and professional expertise remain at the heart of the plan.

Think of VITA as a highly skilled assistant that collates all the multi-agency reports that feeds into a high-quality EHCP and creates a first-draft suggestion which is then reviewed by the local authority SEND team.

VITA enhances, rather than replaces, SEND professionals giving teams more time to tailor support and invest in co-production to make a difference to children and young people's outcomes.

# INTRODUCING VITA

## *What this means for you and your child:*



### **Your child's voice is at the centre of the plan**

- Every detail you share about your child's needs, hopes, and challenges is carefully woven throughout their entire EHCP



### **Higher quality plans from the start**

- VITA creates a "golden thread" connecting your child's needs directly to the support they'll receive and the outcomes they'll achieve
- VITA makes recommendations on how to improve the quality of the draft content, enabling early intervention to continuously improve the advice that feeds into the plans



### **More time with professionals who know your child**

- SEND professionals spend less time on writing first-drafts and more time getting to know your child personally
- More meaningful conversations about what will really make a difference



### **Stronger co-production**

- The time saved on admin work is invested in working with you to perfect your child's plan during the draft EHCP stage
- Local knowledge and expertise are preserved through the process

# SECURITY & DATA PROTECTION

*VITA by Invision360 is an EHCP production support tool, that uses generative AI to automate some of the manual tasks carried out by caseworkers.*

This system helps caseworkers to work more efficiently and focus on interventions that will make the greatest difference to children and young people's outcomes.

VITA augments, rather than replaces, human delivery by producing a first draft suggestion and ongoing 'human-in-the-loop' feedback to quality assure the material generated. For the more high-risk and personalised elements of the EHCP process (children and young people's outcomes) VITA encourages caseworkers and professionals to take ownership of these.



*Caylin - Product Manager*

*At Invision360, we prioritise your privacy and data protection as well as that of your child or young person.*

VITA is designed with robust security features to ensure that your personal information is kept confidential and secure. We comply with all relevant data protection and employ advanced encryption technologies to safeguard your data.

Local authority staff only have access to professional advice and the first iteration text relevant to their caseload. Any Invision360 staff that work on developing the product are DBS checked and only have the minimum access needed to maintain the product's high-quality and safety.

# VITA ENHANCES YOUR INVOLVEMENT - IT NEVER REPLACES IT

## *What stays the same:*



Your right to contribute your views at every stage



Your right to request changes throughout the process



Attending meetings to coproduce your child's plan



The legal protections and timescales that apply to EHCPs

## *What will be better:*



More time in meetings discussing what matters to you and your child



Clearer plans that address your child's needs comprehensively



Consistent quality regardless of which professional drafts the plan



Fewer delays due to the high-quality initial drafts produced by VITA

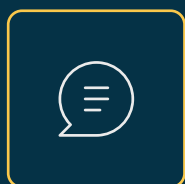
# GETTING INVOLVED AND SUPPORT

## *How to get more information:*



**Click the link below to visit us online:**

[VITA | AI-Driven First-Draft EHCP Writing Tool](#)



**Ask your local authority:**

When will VITA be available in our area?



## *Have your say:*

We're working with Parent Carer Forums and SEND Youth Forums across the country to ensure VITA meets families' needs. Contact your local authority to see how you can get involved.

# FREQUENTLY ASKED QUESTIONS

## *Will AI understand my child's unique needs and personality?*

VITA carefully preserves and organises the understanding that you and professionals have already provided. VITA works like a highly skilled editor, taking all the insights about your child from different sources and making sure they flow together coherently. Your child's individuality comes from your input and professional assessments. Every VITA-generated draft is thoroughly reviewed by experienced SEND professionals before you see it to ensure it's highly individualised.

---

## *What if VITA gets something wrong about my child?*

Every VITA-generated draft is thoroughly reviewed by experienced SEND professionals before you see it. If anything doesn't accurately reflect your child, you have multiple opportunities to correct it - during the professional review stage, in your co-production meeting, and through the normal EHCP review process. VITA creates a starting point, not a final decision.

---

## *Does VITA remove the human from developing an EHCP?*

No, all professional assessments (e.g., Educational Psychologist assessment) still occur using local expertise. The views of the children and young people, parent/carer, and teachers are still accessed and submitted in the same way. This information is inputted into the VITA platform, which collates, reviews, and synthesizes this into a first iteration of an EHCP. The local authority SEND officer then reviews and amends this version before producing the Draft EHCP, which can then be discussed with the child or young person and parents/carers in a coproduced meeting.

# FREQUENTLY ASKED QUESTIONS

## *Why is there a need for VITA?*

The quality of EHCPs is an area of challenge nationally. EHCP quality is one of the most prevalent areas of weakness identified in Local Area SEND inspections undertaken by Ofsted and CQC across the country. There has been a big focus on 'timeliness' in terms of an EHCP being produced within the statutory 20-week timeframe, however, we at Invision360 believe quality should not be compromised and should be a key focus area.

---

## *Does VITA promote coproduction?*

Yes, all of the coproduced local assessments (e.g., Educational Psychologist assessment, speech and language therapist assessment, teachers' feedback, and children and young people and parent/carer views) are inputted into VITA to ensure an individualised and coproduced EHCP. In addition, the manual resources/time saved can be redirected into other SEND activities such as co-produced meetings at the EHCP draft phase.

---

## *What if my local authority doesn't use VITA?*

You can encourage them to consider it. You can ask your local Parent Carer Forum or local authority SEND team about their plans for improving EHCP quality and mention VITA as a potential solution.

# FREQUENTLY ASKED QUESTIONS

## *How will the tool collect, store, and handle C/YP's, and their parents / carers data?*

VITA prioritises the security and privacy of personal information through stringent data protection measures, including:

- All uploads are AES-256 encrypted to ensure maximum security during storage and transmission.
- VITA is hosted exclusively in London-based AWS data centres, ensuring data sovereignty and rapid, reliable access.
- The platform is both ISO27001 and Cyber Essentials Plus certified—demonstrating our commitment to information security, risk management, and cyber resilience.
- VITA is fully aligned with local authority safeguarding and GDPR responsibilities, offering confidence that all processes, controls, and protections meet or exceed public sector requirements.

---

## *Which, if any, other organisations / third parties will have access to the data?*

Our product is built on AWS infrastructure which provides us with industry-leading security, scalability, reliable performance. There are no other third parties which will have access to the data without consent from the local authority.